

Specification - Com Lite Tracklights

Revision 1



Product Information			
Model No.	TS10BK/WH	TS25BK/WH	TS40BK/WH
Power Consumption(±5%)	9w	23w	39w
Power Supply	Com Lite		
Input Voltage	220-240 VAC, 50-60Hz		
Power Factor	>0.90		
Driver Type	Constant Current		
LED Type	COB		
Beam Angle Supplied	45 degrees	60 degrees	60 degrees
Beam Angle Options	24 or 36 degrees (order ref LENS24 and LENS36)		
Luminous Flux (±10%) 3000k Ra80	770lm	2270lm	3890lm
Luminous Flux (±10%) 4000k Ra80	900lm	2765lm	4100lm
Efficiency (4000k)	>100lm per watt	>120lm per watt	>105lm per watt
CCT	3000k or 4000k (5000k/6000k special order)		
Colour Rendering Index	Ra80		
Class	Class I		
SCDM	< 6		
IK rating	IK06		
IP Rating	IP20		
Colour	White (RAL9016) , Black (RAL9005)		
Dimensions (Dia x H)	Φ65*249mm	Φ85*269mm	Φ100*302mm
Options			
Dimmable	Dali (special order) or Triac (stocked)		
Emergency	Standalone emergency track spot available		
Sensor	NA		

Applications

Board Rooms, Corridors, Hotels, Reception Area's, Retail

Lifespan and Warranty

Lifetime of LED @ Ta=25°C > 50,000hrs L80B20

Warranty 5 years

Accessories

3 circuit track



Models

CLTBK1000
CLTBK3000

1mtr length of Black Track
3mtr length of Black Track

CLTWH1000
CLTWH3000

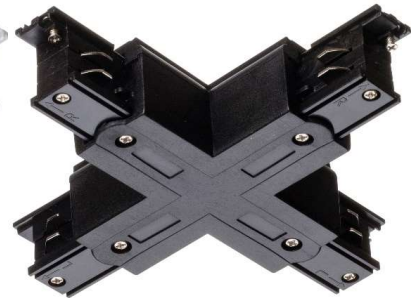
1mtr length of White Track
3mtr length of White Track



CLTSMIBK (Track Joiner)



CLTSTWH (Track T Piece Joiner)



CLTSXBK (Track X Piece Joiner)



CLTSLWH (Track L Piece Joiner)

Other Accessories

CLTSLEBK Live end Black
CLTSLEWH Live end White
CLTSECBK Endcap Black
CLTSECWH Endcap White
TR/SUS Track suspension kit 5mtrs

MP/BK Monopoint Base for Black spots
MP/WH Monopoint Base for White spots